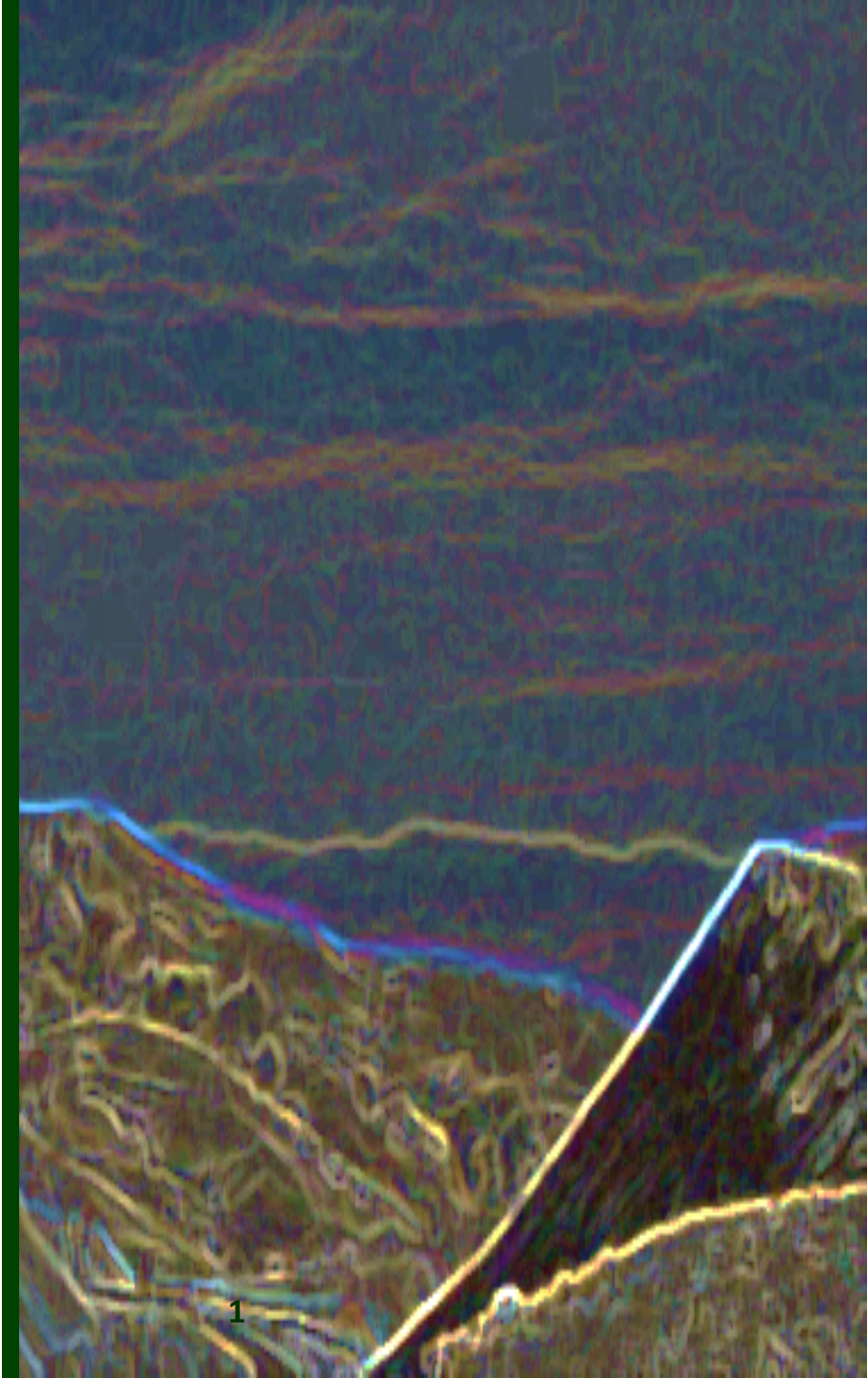


# Re-imagining Kennecott: Collaboration for Successful Residential and Ecological Reuse

**John Birkinshaw**

**Principal Advisor, Land Management**

**Kennecott Utah Copper, LLC**



# Adapting Industrial Lands for Future Use



**South Jordan Evaporation Ponds** (*Source: Rio Tinto Kennecott*)



# South Jordan Evaporation Ponds



**South Jordan Evaporation Ponds during Reclamation**



**South Jordan Evaporation Ponds after Reclamation**

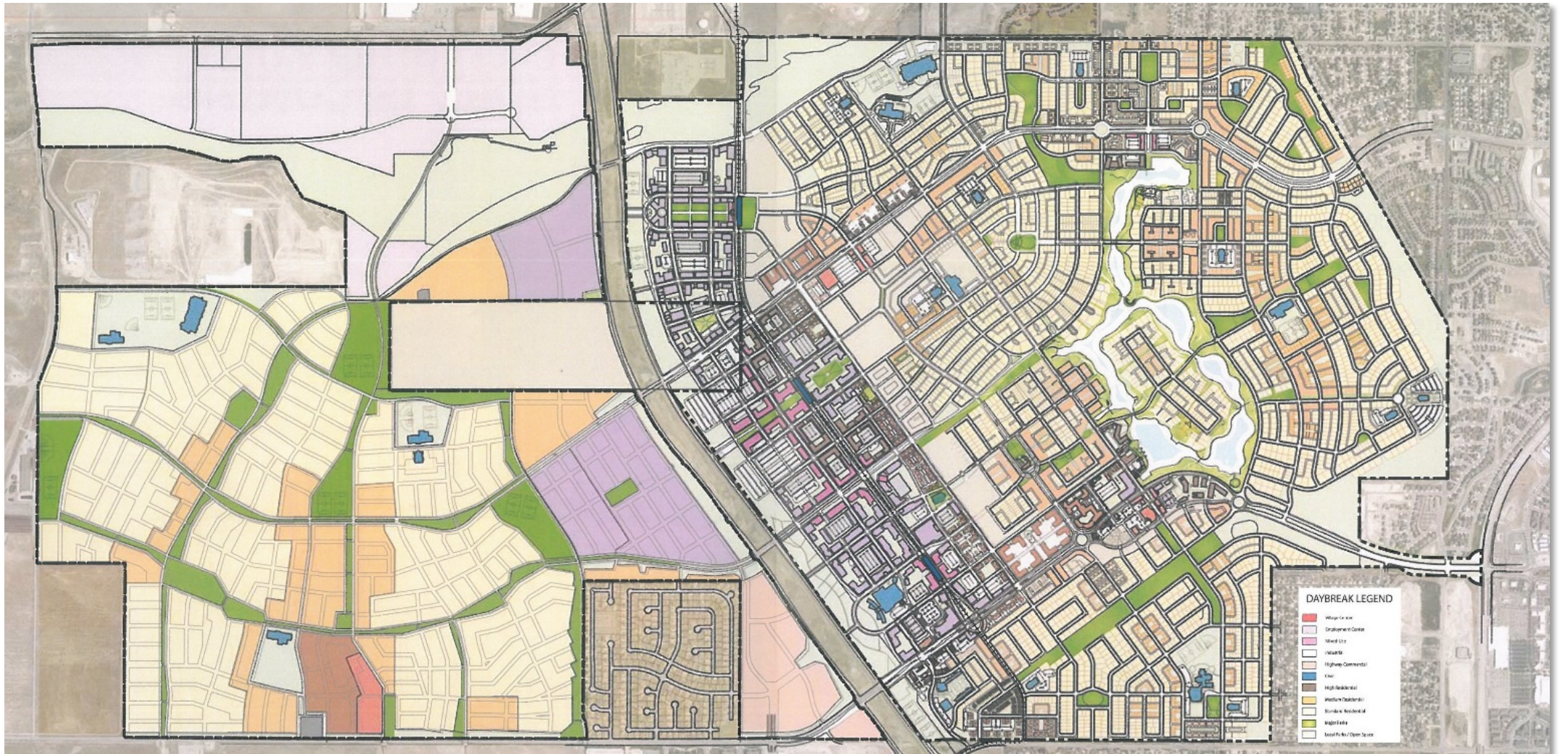


# South Zone - Daybreak Community Timeline

- **1999 – Master Plan for Daybreak Community**
- **2001 – Kennecott Land Company established**
- 2003 - Construction begins at Daybreak
- November 2004 – Daybreak Move-In
- August 2005 - Daybreak Elementary Opening



# Daybreak Community Master Plan



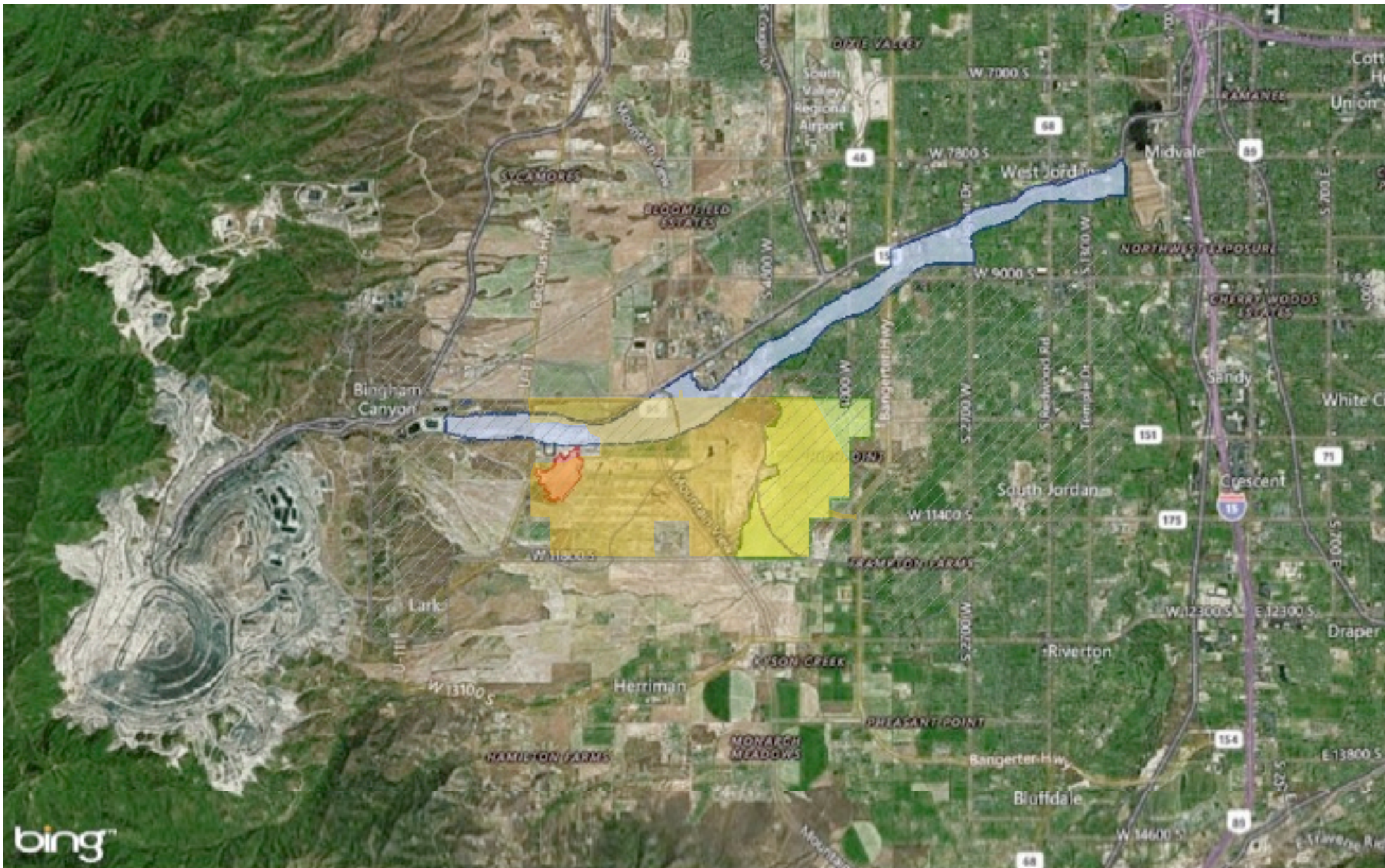




# South Zone - Daybreak Community Timeline Cont.

- 1999 – Master Plan for Daybreak Community
- 2001 – Kennecott Land Company established
- **2003 - Construction begins at Daybreak**
- **November 2004 – Daybreak Move-In**
- **August 2005 - Daybreak Elementary Opening**





OU 2



OU 17



OU 1



OU 7



Daybreak





# Daybreak Community - Transit



**Utah Transit Authority light rail service in Daybreak.**



# Daybreak Community - Housing





# Daybreak Community – Commercial





# Daybreak Community – Ecological





# North Zone Reuse – Water Fowl Reserve



**View from Inland Sea Shorebird Reserve toward Smelter.**





# For More Information, Contact

**John Birkinshaw**

**Principal Advisor, Land Management**

**Kennecott Utah Copper, LLC**

Phone: 801-204-2756

Email: [john.birkinshaw@riotinto.com](mailto:john.birkinshaw@riotinto.com)